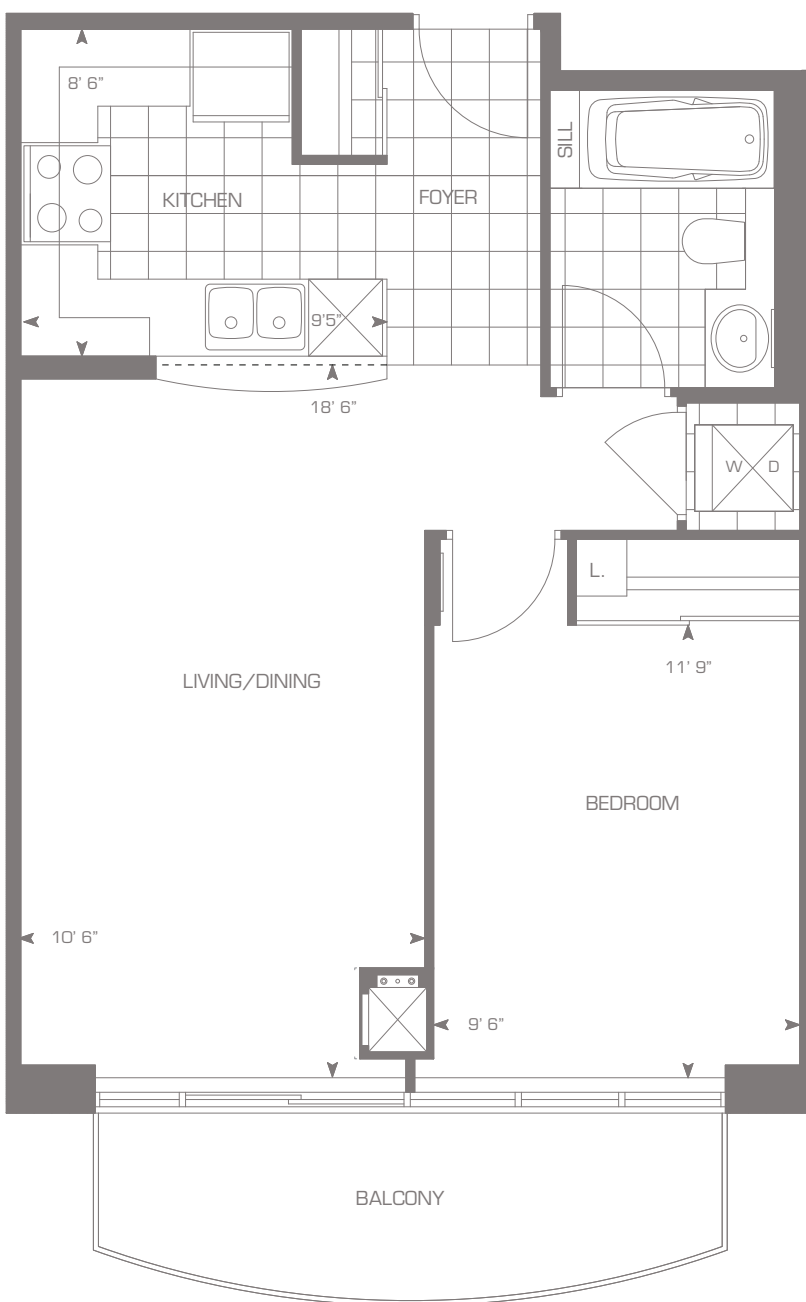


SUITE OF THE MONTH



the ADMIRAL
600 Sq.Ft. 1 Bedroom

**NEW Feature Suite Pricing From \$254,900
PLUS Bonus \$10,000* In Savings**



- Fabulous Unobstructed South View Overlooking Serene Parkland
- Bright Open Concept Layout
- Spacious balcony
- Close to Parks, Schools, & Erin Mills Town Centre
- Great Mississauga Location
- Under Construction

VISIT THE SALES CENTRE TODAY
OTHER SUITES STILL AVAILABLE



2475 Eglinton Ave. W. Mississauga.
NE corner of Eglinton & Erin Mills Parkway.
HOURS: Mon.-Thurs.: 12pm-7pm,
Sat. & Sun.: 12pm-6pm



miracleinmississauga.com
905.603.6300



PembertonGroup.com
it's all about you®



*See a Sales Representative for full details. Brokers Protected. Prices and Specifications are subject to change without notice. E.&O.E.